

NOTES:

1) FOR OPTIMAL REINFORCEMENT PLACEMENT IN THE NUDURA FORM, SPACING OF HORIZONTAL REINFORCEMENT TO BE SPECIFIED AT 18" (457mm) O.C. AND VERTICAL REINFORCEMENT TO BE SPECIFIED AT MULTIPLES OF 8" (203mm) O.C. REFER TO NUDURA REINFORCEMENT PLACEMENT DETAILS.

This detail is for general informational purposes only. The project design professional determines, in its sole discretion, whether this detail or a functionally equivalent detail is best suited for the project with respect to any architecture, engineering, and design requirements, including any local building code requirements. If this document is not reviewed and the product is not approved for use by a licensed design professional, the customer agrees that the detail may contain substantive flaws requiring correction, and hereby releases Tremco CPG Inc. from any and all liability related to the design and installation of the product. This detail is subject to change without notice. Contact Tremco to ensure you have the most recent version.

Below Grade Construction

Detail: Nudura 8" (203mm) Form Unit, Striped Footing Detail with Non-Insulated Slab

Drawn by: TVC

Checked by: KS

Scale: 1:8

Revision #: 03

Revised by: KAB

Date: 3/13/2024

File Name:

B8A01

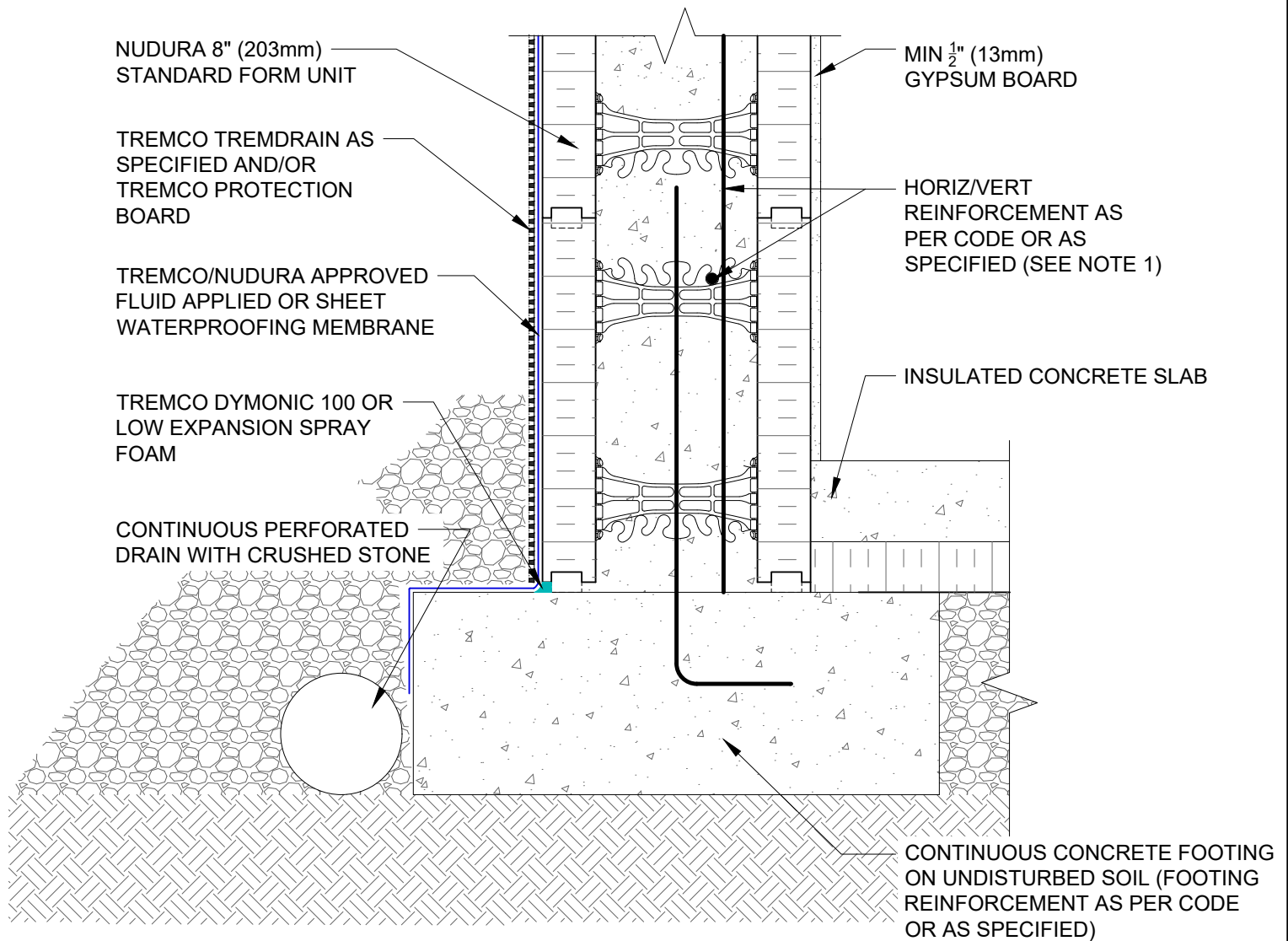


Nudura Technical Support: 866-468-6299
International: +1 705-726-9499

www.tremcocpg.com



Construction Products Group

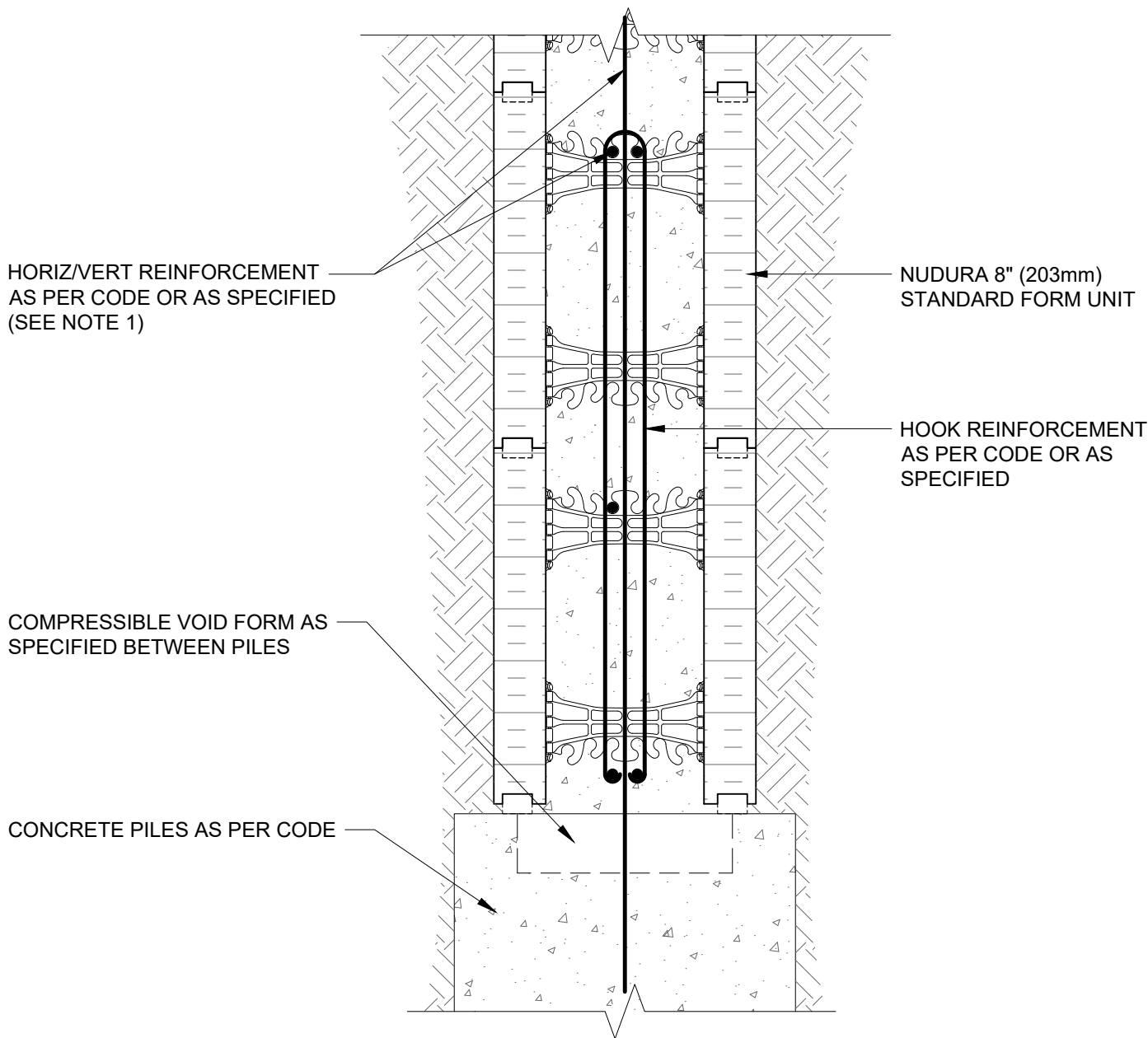


NOTES:

1) FOR OPTIMAL REINFORCEMENT PLACEMENT IN THE NUDURA FORM, SPACING OF HORIZONTAL REINFORCEMENT TO BE SPECIFIED AT 18" (457mm) O.C. AND VERTICAL REINFORCEMENT TO BE SPECIFIED AT MULTIPLES OF 8" (203mm) O.C. REFER TO NUDURA REINFORCEMENT PLACEMENT DETAILS.

This detail is for general informational purposes only. The project design professional determines, in its sole discretion, whether this detail or a functionally equivalent detail is best suited for the project with respect to any architecture, engineering, and design requirements, including any local building code requirements. If this document is not reviewed and the product is not approved for use by a licensed design professional, the customer agrees that the detail may contain substantive flaws requiring correction, and hereby releases Tremco CPG Inc. from any and all liability related to the design and installation of the product. This detail is subject to change without notice. Contact Tremco to ensure you have the most recent version.

Below Grade Construction



NOTES:

1) FOR OPTIMAL REINFORCEMENT PLACEMENT IN THE NUDURA FORM, SPACING OF HORIZONTAL REINFORCEMENT TO BE SPECIFIED AT 18" (457mm) O.C. AND VERTICAL REINFORCEMENT TO BE SPECIFIED AT MULTIPLES OF 8" (203mm) O.C. REFER TO NUDURA REINFORCEMENT PLACEMENT DETAILS.

This detail is for general informational purposes only. The project design professional determines, in its sole discretion, whether this detail or a functionally equivalent detail is best suited for the project with respect to any architecture, engineering, and design requirements, including any local building code requirements. If this document is not reviewed and the product is not approved for use by a licensed design professional, the customer agrees that the detail may contain substantive flaws requiring correction, and hereby releases Tremco CPG Inc. from any and all liability related to the design and installation of the product. This detail is subject to change without notice. Contact Tremco to ensure you have the most recent version.

Below Grade Construction



Nudura Technical Support: 866-468-6299
International: +1 705-726-9499

Detail: Nudura 8" (203mm) Form Unit, Stem Wall on Piles

Drawn by: TVC

Checked by: KS

Scale: 1:8

Revision #: 04

Revised by: KAB

Date: 3/13/2024

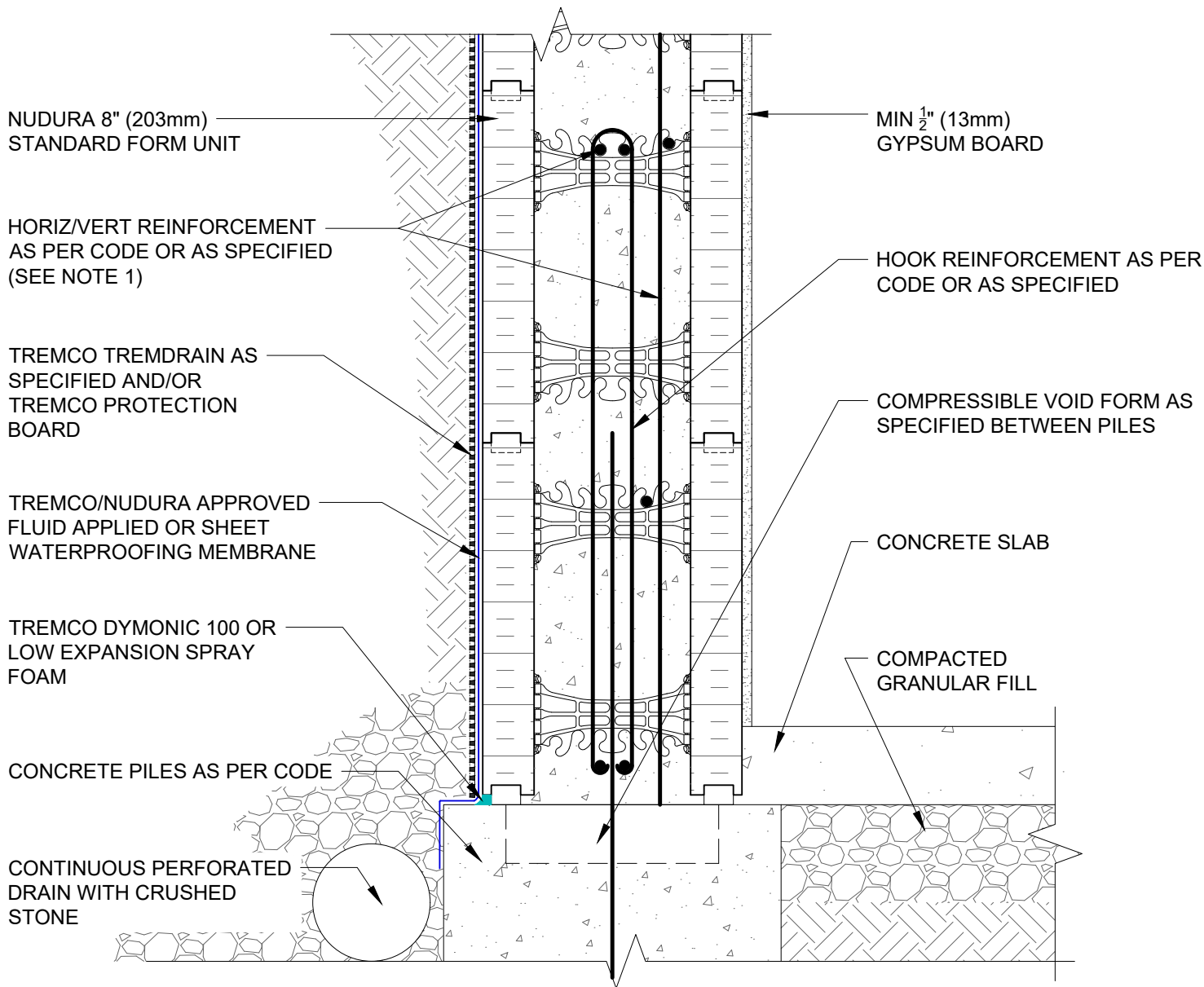
File Name:

B8C07



Construction Products Group

www.tremcocpg.com



NOTES:

1) FOR OPTIMAL REINFORCEMENT PLACEMENT IN THE NUDURA FORM, SPACING OF HORIZONTAL REINFORCEMENT TO BE SPECIFIED AT 18" (457mm) O.C. AND VERTICAL REINFORCEMENT TO BE SPECIFIED AT MULTIPLES OF 8" (203mm) O.C. REFER TO NUDURA REINFORCEMENT PLACEMENT DETAILS.

This detail is for general informational purposes only. The project design professional determines, in its sole discretion, whether this detail or a functionally equivalent detail is best suited for the project with respect to any architecture, engineering, and design requirements, including any local building code requirements. If this document is not reviewed and the product is not approved for use by a licensed design professional, the customer agrees that the detail may contain substantive flaws requiring correction, and hereby releases Tremco CPG Inc. from any and all liability related to the design and installation of the product. This detail is subject to change without notice. Contact Tremco to ensure you have the most recent version.

Below Grade Construction



Nudura Technical Support: 866-468-6299
International: +1 705-726-9499

Detail: Nudura 8" (203mm) Form Unit, Stem Wall on Piles with Concrete Slab,
Below Grade

Drawn by: TVC

Checked by: KS

Scale: 1:8

Revision #: 04

Revised by: KAB

Date: 3/13/2024

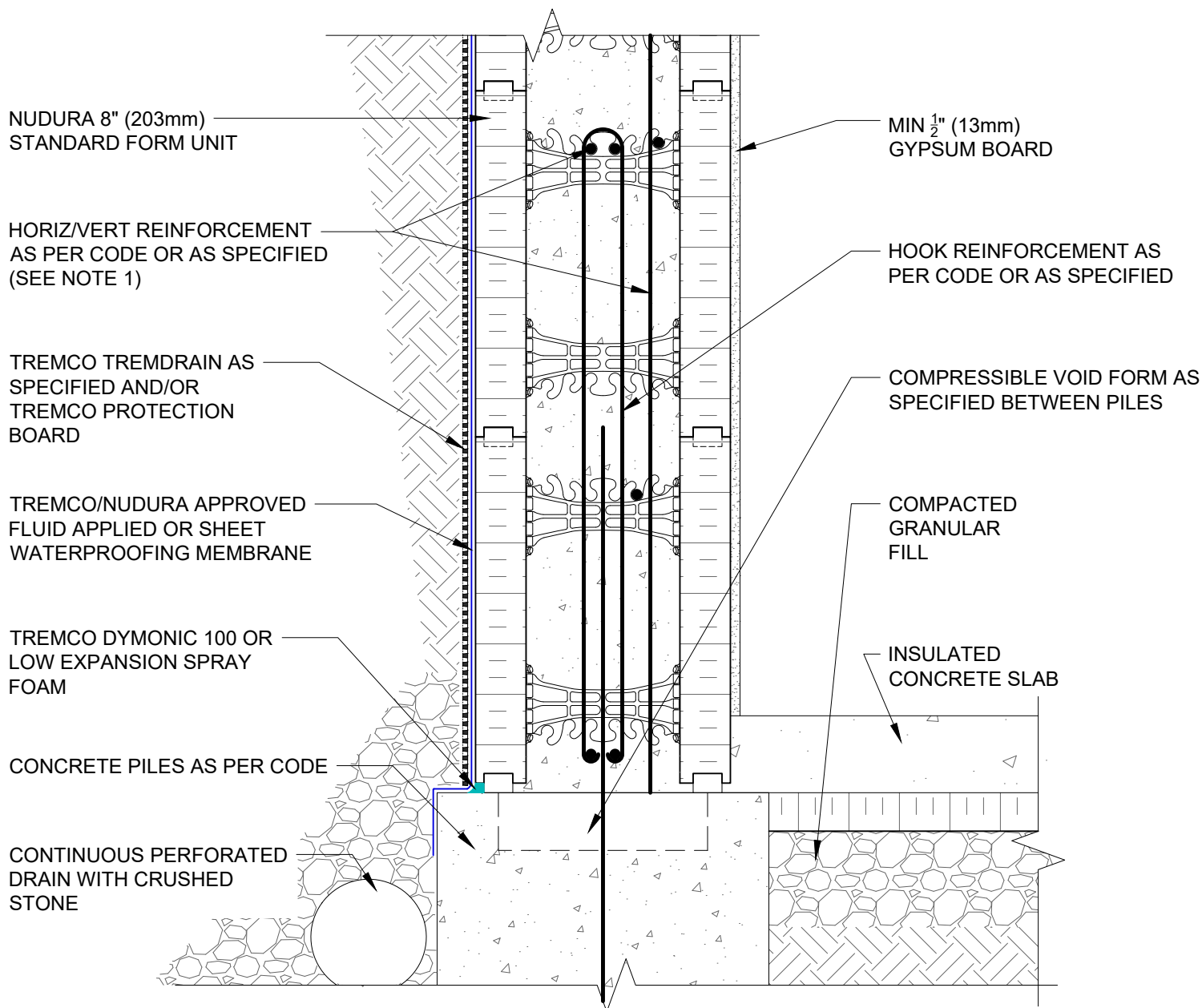
File Name:

B8C09



Construction Products Group

www.tremcocpg.com



NOTES:

1) FOR OPTIMAL REINFORCEMENT PLACEMENT IN THE NUDURA FORM, SPACING OF HORIZONTAL REINFORCEMENT TO BE SPECIFIED AT 18" (457mm) O.C. AND VERTICAL REINFORCEMENT TO BE SPECIFIED AT MULTIPLES OF 8" (203mm) O.C. REFER TO NUDURA REINFORCEMENT PLACEMENT DETAILS.

This detail is for general informational purposes only. The project design professional determines, in its sole discretion, whether this detail or a functionally equivalent detail is best suited for the project with respect to any architecture, engineering, and design requirements, including any local building code requirements. If this document is not reviewed and the product is not approved for use by a licensed design professional, the customer agrees that the detail may contain substantive flaws requiring correction, and hereby releases Tremco CPG Inc. from any and all liability related to the design and installation of the product. This detail is subject to change without notice. Contact Tremco to ensure you have the most recent version.

Below Grade Construction



Nudura Technical Support: 866-468-6299
International: +1 705-726-9499

Detail: Nudura 8" (203mm) Form Unit, Stem Wall on Piles with Insulated Concrete Slab, Below Grade

Drawn by: TVC

Checked by: KS

Scale: 1:8

Revision #: 04

Revised by: KAB

Date: 3/13/2024

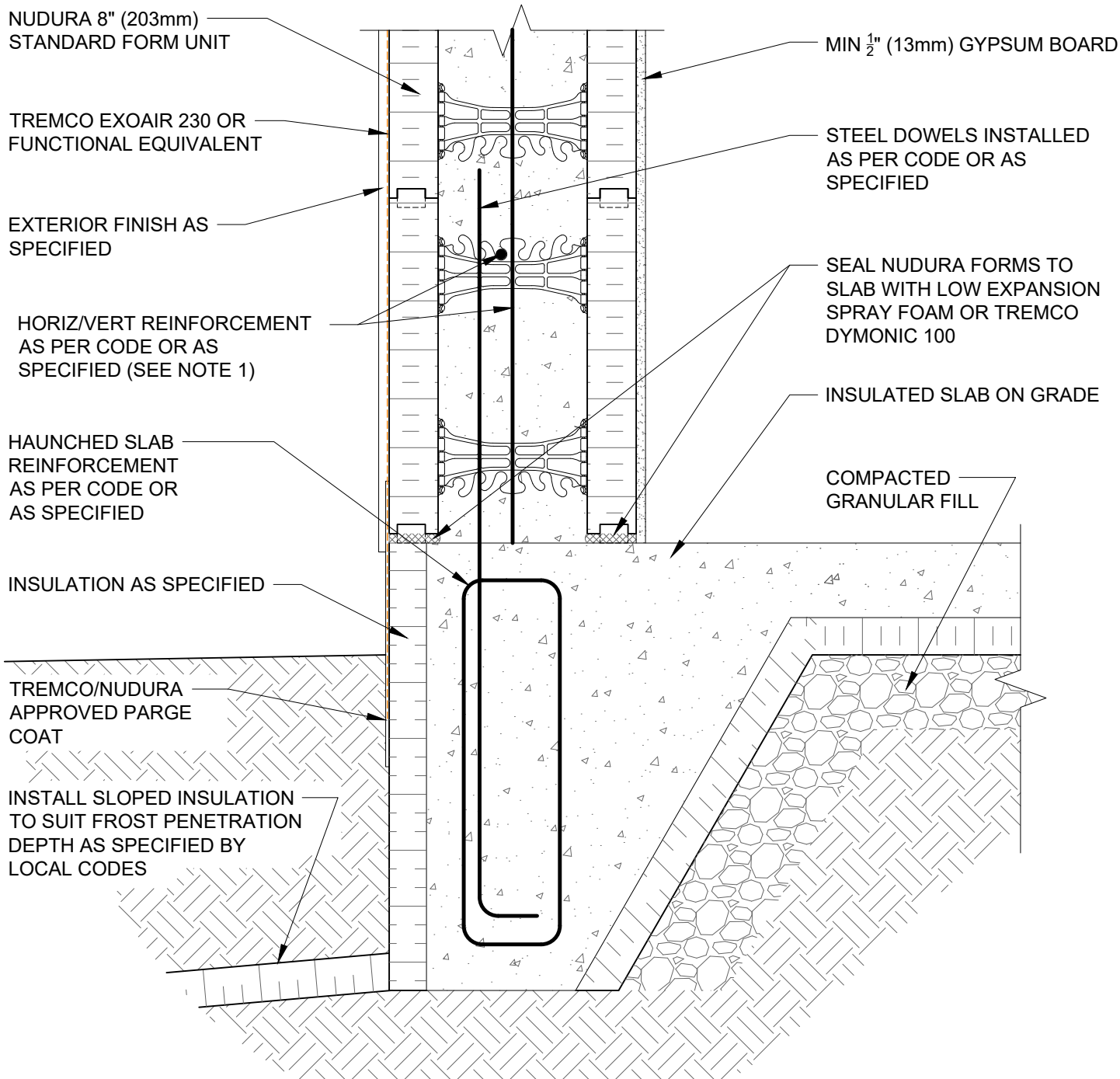
File Name:

B8C10



Construction Products Group

www.tremcocpg.com



NOTES:

1) FOR OPTIMAL REINFORCEMENT PLACEMENT IN THE NUDURA FORM, SPACING OF HORIZONTAL REINFORCEMENT TO BE SPECIFIED AT 18" (457mm) O.C. AND VERTICAL REINFORCEMENT TO BE SPECIFIED AT MULTIPLES OF 8" (203mm) O.C. REFER TO NUDURA REINFORCEMENT PLACEMENT DETAILS.

This detail is for general informational purposes only. The project design professional determines, in its sole discretion, whether this detail or a functionally equivalent detail is best suited for the project with respect to any architecture, engineering, and design requirements, including any local building code requirements. If this document is not reviewed and the product is not approved for use by a licensed design professional, the customer agrees that the detail may contain substantive flaws requiring correction, and hereby releases Tremco CPG Inc. from any and all liability related to the design and installation of the product. This detail is subject to change without notice. Contact Tremco to ensure you have the most recent version.

Below Grade Construction



Nudura Technical Support: 866-468-6299
International: +1 705-726-9499

Detail: Nudura 8" (203mm) Form Unit, Haunched Slab Detail, Exterior Finish
Specified, Insulated

Drawn by: TVC

Checked by: KS

Scale: 1:8

Revision #: 04

Revised by: KAB

Date: 3/13/2024

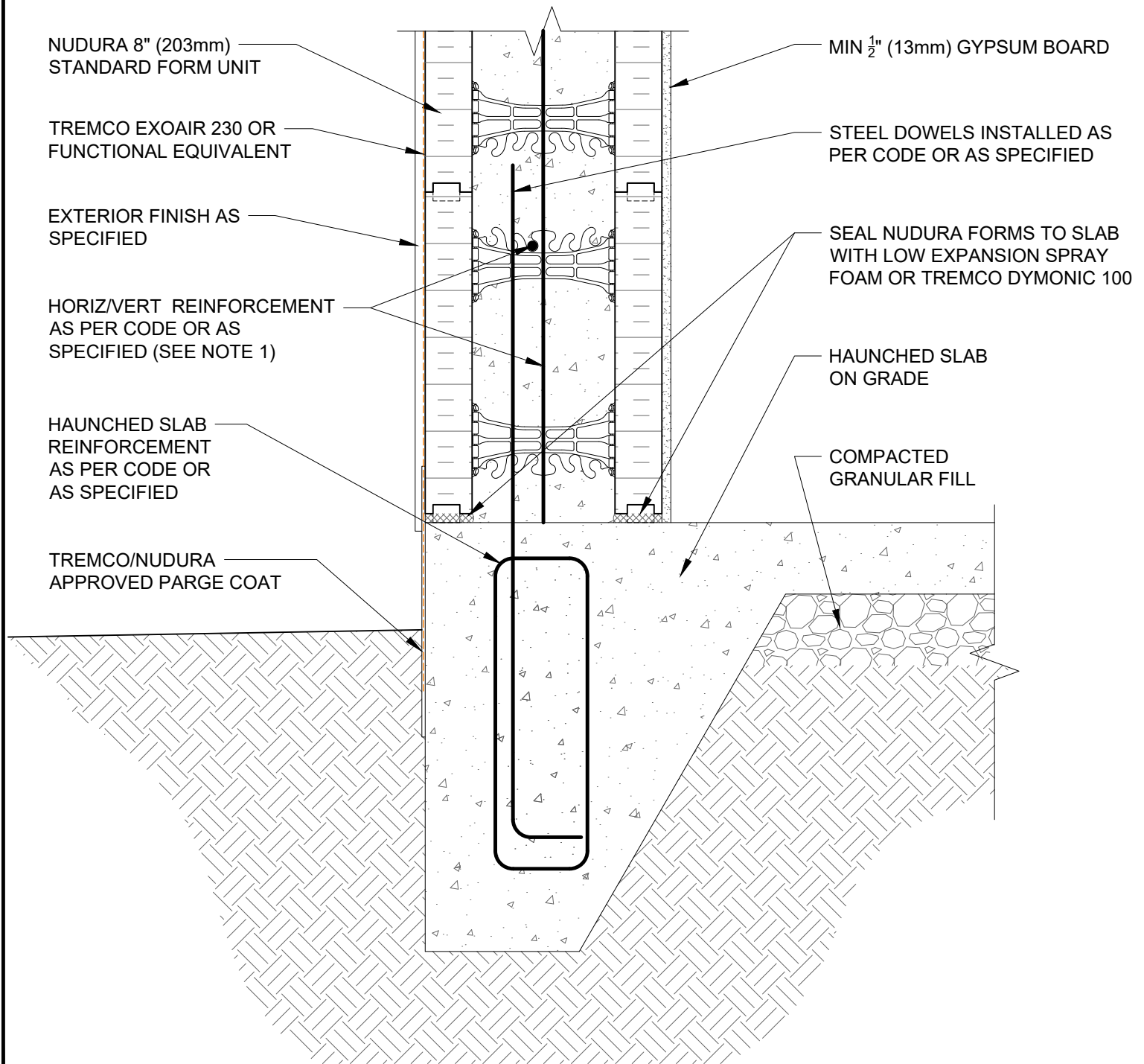
File Name:

B8D01



Construction Products Group

www.tremcocpg.com



NOTES:

1) FOR OPTIMAL REINFORCEMENT PLACEMENT IN THE NUDURA FORM, SPACING OF HORIZONTAL REINFORCEMENT TO BE SPECIFIED AT 18" (457mm) O.C. AND VERTICAL REINFORCEMENT TO BE SPECIFIED AT MULTIPLES OF 8" (203mm) O.C. REFER TO NUDURA REINFORCEMENT PLACEMENT DETAILS.

This detail is for general informational purposes only. The project design professional determines, in its sole discretion, whether this detail or a functionally equivalent detail is best suited for the project with respect to any architecture, engineering, and design requirements, including any local building code requirements. If this document is not reviewed and the product is not approved for use by a licensed design professional, the customer agrees that the detail may contain substantive flaws requiring correction, and hereby releases Tremco CPG Inc. from any and all liability related to the design and installation of the product. This detail is subject to change without notice. Contact Tremco to ensure you have the most recent version.

Below Grade Construction



Nudura Technical Support: 866-468-6299
International: +1 705-726-9499

Detail: Nudura 8" (203mm) Form Unit, Haunched Slab Detail, Exterior Finish
Specified, Non-Insulated

Drawn by: TVC

Checked by: KS

Scale: 1:8

Revision #: 04

Revised by: KAB

Date: 3/13/2024

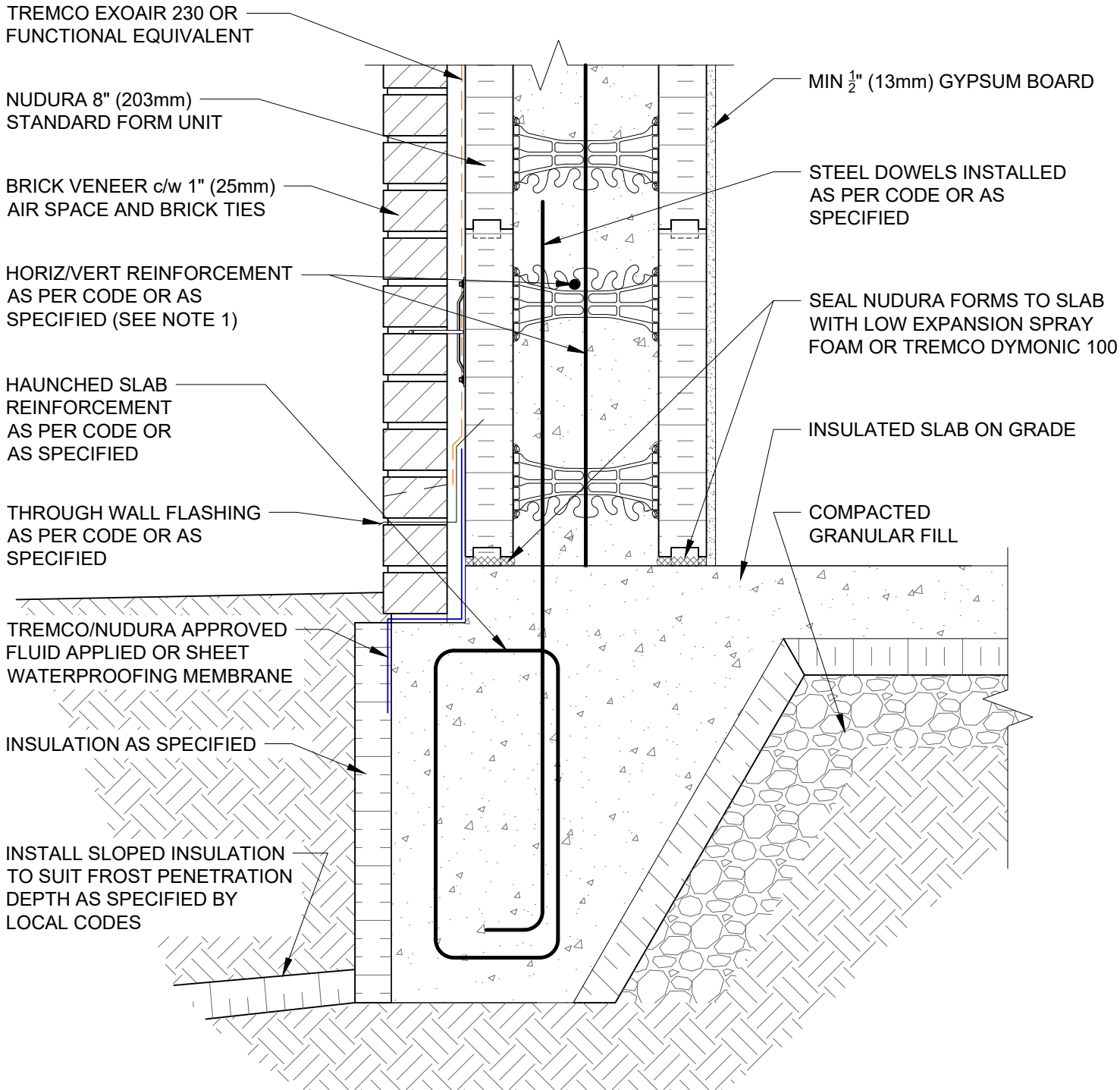
File Name:

B8D02



Construction Products Group

www.tremcocpg.com



NOTES:

1) FOR OPTIMAL REINFORCEMENT PLACEMENT IN THE NUDURA FORM, SPACING OF HORIZONTAL REINFORCEMENT TO BE SPECIFIED AT 18" (457mm) O.C. AND VERTICAL REINFORCEMENT TO BE SPECIFIED AT MULTIPLES OF 8" (203mm) O.C. REFER TO NUDURA REINFORCEMENT PLACEMENT DETAILS.

This detail is for general informational purposes only. The project design professional determines, in its sole discretion, whether this detail or a functionally equivalent detail is best suited for the project with respect to any architecture, engineering, and design requirements, including any local building code requirements. If this document is not reviewed and the product is not approved for use by a licensed design professional, the customer agrees that the detail may contain substantive flaws requiring correction, and hereby releases Tremco CPG Inc. from any and all liability related to the design and installation of the product. This detail is subject to change without notice. Contact Tremco to ensure you have the most recent version.

Below Grade Construction

 Nudura Technical Support: 866-468-6299 International: +1 705-726-9499	Detail: Nudura 8" (203mm) Form Unit, Haunched Slab Detail, Brick Veneer Finish, Insulated			File Name:
	Drawn by: TVC	Checked by: KS	Scale: 1:8	B8D03
	Revision #: 02	Revised by: KAB	Date: 3/13/2024	
	www.tremcocpg.com			
	 Construction Products Group			

TREMCO EXOAIR 230 OR
FUNCTIONAL EQUIVALENT

NUDURA 8" (203mm)
STANDARD FORM UNIT

BRICK VENEER c/w 1" (25mm)
AIR SPACE AND BRICK TIES

HORIZ/VERT REINFORCEMENT
AS PER CODE OR AS
SPECIFIED (SEE NOTE 1)

HAUNCHED SLAB REINFORCEMENT
AS PER CODE OR AS SPECIFIED

THROUGH WALL FLASHING
AS PER CODE OR AS
SPECIFIED

TREMCO/NUDURA APPROVED
FLUID APPLIED OR SHEET
WATERPROOFING MEMBRANE

MIN $\frac{1}{2}$ " (13mm) GYPSUM BOARD

STEEL DOWELS INSTALLED AS
PER CODE OR AS SPECIFIED

SEAL NUDURA FORMS TO SLAB
WITH LOW EXPANSION SPRAY
FOAM OR TREMCO DYMONIC 100

HAUNCHED SLAB
ON GRADE

COMPACTED
GRANULAR FILL

NOTES:

1) FOR OPTIMAL REINFORCEMENT PLACEMENT IN THE NUDURA FORM, SPACING OF HORIZONTAL REINFORCEMENT TO BE SPECIFIED AT 18" (457mm) O.C. AND VERTICAL REINFORCEMENT TO BE SPECIFIED AT MULTIPLES OF 8" (203mm) O.C. REFER TO NUDURA REINFORCEMENT PLACEMENT DETAILS.

This detail is for general informational purposes only. The project design professional determines, in its sole discretion, whether this detail or a functionally equivalent detail is best suited for the project with respect to any architecture, engineering, and design requirements, including any local building code requirements. If this document is not reviewed and the product is not approved for use by a licensed design professional, the customer agrees that the detail may contain substantive flaws requiring correction, and hereby releases Tremco CPG Inc. from any and all liability related to the design and installation of the product. This detail is subject to change without notice. Contact Tremco to ensure you have the most recent version.

Below Grade Construction



Nudura Technical Support: 866-468-6299
International: +1 705-726-9499

Detail: Nudura 8" (203mm) Form Unit, Haunched Slab Detail, Brick Veneer
Finish, Non-Insulated

Drawn by: TVC

Checked by: KS

Scale: 1:8

Revision #: 03

Revised by: KAB

Date: 3/13/2024

File Name:

B8D04



Construction Products Group

www.tremcocpg.com